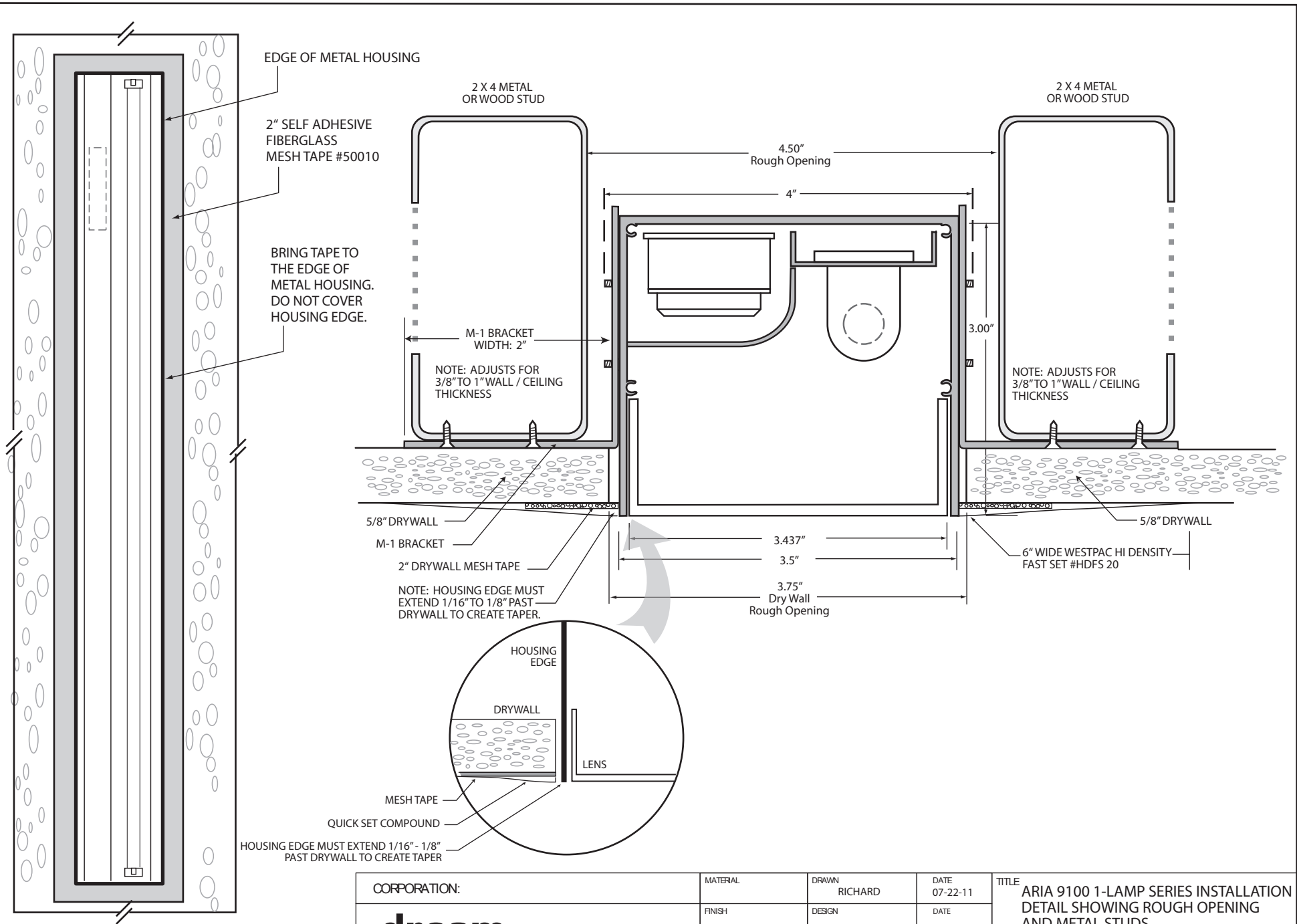


A | B | C | D | E | F | G

1
2
3
4
5
6



HOUSING EDGE MUST EXTEND 1/16" - 1/8" PAST DRYWALL TO CREATE TAPER

specifications subject to change without notice

CORPORATION:

dreamscape
LIGHTING MFG., INC.

MATERIAL	DRAWN RICHARD	DATE 07-22-11
FINISH	DESIGN	DATE
DIMENSIONS ARE IN:	ISSUED	DATE

TITLE	
ARIA 9100 1-LAMP SERIES INSTALLATION DETAIL SHOWING ROUGH OPENING AND METAL STUDS	
SIZE	PART NO.
SCALE 1.0 - FULL	SHEET

NOTE: THIS DRAWING CONTAINS PROPRIETARY INFORMATION. UNAUTHORIZED USE OR COPY WILL VIOLATE INTERNATIONAL COPYRIGHT LAWS.